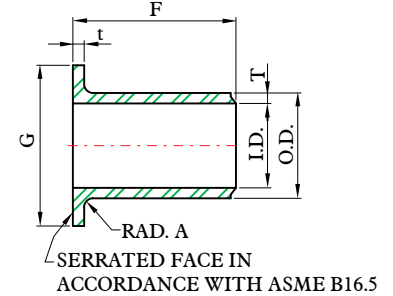
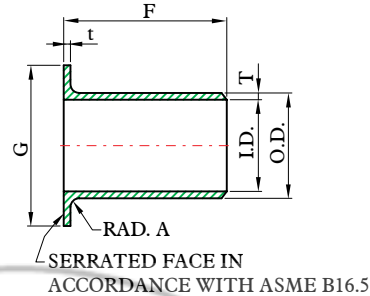


ASTM A403 WELDED FITTINGS

LAP- JOINT STUB END / STUB ENDS LONG TYPE "A"



All schedules of Long (ANSI Length) Stub Ends are usually supplied in Type A.



TYPE A

TYPE A

Schedules 80S 160 and XX Strong Wall Stub Ends are supplied in Long Lengths. Short Lengths are available on special order.

DIMENSIONS

unit : inch / lb

Nominal Pipe Size	Outside diameter (O.D.)	Diameter (G)	Length (J)	Radius (A)	Schedule 40S				Schedule 80S			
					Inside Diameter (I.D.)	Wall Thickness (T)	Lap Thickness (t)	Approx. weight**	Inside Diameter (I.D.)	Wall Thickness (T)	Lap Thickness (t)	Approx. weight**
1/2	.840	1.375	3	1/8	.622	.109	.109	.26	.546	.147	.147	.34
3/4	1.050	1.688	3	1/8	.824	.113	.113	.36	.742	.154	.154	.47
1	1.315	2.000	4	1/8	1.049	.133	.133	.68	.957	.179	.179	.88
1-1/4	1.660	2.500	4	3/16	1.380	.140	.140	.97	1.278	.191	.191	1.26
1-1/2	1.900	2.875	4	1/4	1.610	.145	.145	1.20	1.500	.200	.200	1.49
2	2.375	3.625	6	5/16	2.067	.154	.154	2.25	1.939	.218	.218	3.05
2-1/2	2.875	4.125	6	5/16	2.469	.203	.203	3.40	2.323	.276	.276	4.40
3	3.500	5.000	6	3/8	3.068	.216	.216	4.65	2.900	.300	.300	6.50
3-1/2	4.000	5.500	6	3/8	3.548	.226	.226	5.89	3.364	.318	.318	7.75
4	4.500	6.188	6	7/16	4.026	.237	.237	6.83	3.826	.337	.337	9.65
5	5.563	7.313	8	7/16	5.047	.258	.258	11.88	4.813	.375	.375	16.33
6	6.625	8.500	8	1/2	6.065	.280	.280	15.18	5.761	.432	.432	22.63
8	8.625	10.625	8	1/2	7.981	.322	.322	23.81	7.625	.500	.500	34.12
10	10.750	12.750	10	1/2	10.020	.365	.365	39.50	9.750	.500	.500	54.00
12	12.750	15.000	10	1/2	12.000	.375	.375	48.50	11.750	.500	.500	64.50
14	14.000	16.250	12	1/2	13.250	.375	.375	63.00	13.000	.500	.500	84.00
16	16.000	18.500	12	1/2	15.250	.375	.375	73.50	15.000	.500	.500	98.00
18	18.000	21.000	12	1/2	17.250	.375	.375	99.00	17.000	.500	.500	136.00
20	20.000	23.000	12	1/2	19.250	.375	.375	108.00	19.000	.500	.500	157.00
24	24.000	27.250	12	1/2	23.250	.375	.375	139.00	23.000	.500	.500	178.00